

Association of Combined Patterns of Tobacco and Cannabis Use in Adolescence With Psychotic Experiences

Hannah J. Jones, PhD; Suzanne H. Gage, PhD; Jon Heron, PhD; Matthew Hickman, PhD; Glyn Lewis, PhD; Marcus R. Munafò, PhD; Stanley Zammit, PhD

[+ Supplemental content](#)

IMPORTANCE There is concern about potentially causal effects of tobacco use on psychosis, but epidemiological studies have been less robust in attempts to minimize effects of confounding than studies of cannabis use have been.

OBJECTIVES To examine the association of patterns of cigarette and cannabis use with preceding and subsequent psychotic experiences, and to compare effects of confounding across these patterns.

DESIGN, SETTING, AND PARTICIPANTS This cohort study used data from the Avon Longitudinal Study of Parents and Children, which initially consisted of 14 062 children. Data were collected periodically from September 6, 1990, with collection ongoing, and analyzed from August 8, 2016, through June 14, 2017. Cigarette and cannabis use data were summarized using longitudinal latent class analysis to identify longitudinal classes of substance use. Associations between classes and psychotic experiences at age 18 years were assessed.

EXPOSURES Depending on the analysis model, exposures were longitudinal classes of substance use or psychotic experiences at age 12 years.

MAIN OUTCOMES AND MEASURES Logistic regression was used to examine the associations between substance use longitudinal classes and subsequent onset of psychotic experiences.

RESULTS Longitudinal classes were derived using 5300 participants (56.1% female) who had at least 3 measures of cigarette and cannabis use from ages 14 to 19 years. Prior to adjusting for a range of potential confounders, there was strong evidence that early-onset cigarette-only use (4.3%), early-onset cannabis use (3.2%), and late-onset cannabis use (11.9%) (but not later-onset cigarette-only use [14.8%]) latent classes were associated with increased psychotic experiences compared with nonusers (65.9%) (omnibus $P < .001$). After adjusting for confounders, the association for early-onset cigarette-only use attenuated substantially (unadjusted odds ratio [OR], 3.03; 95% CI, 1.13-8.14; adjusted OR, 1.78; 95% CI, 0.54-5.88), whereas those for early-onset cannabis use (adjusted OR, 3.70; 95% CI, 1.66-8.25) and late-onset cannabis use (adjusted OR, 2.97; 95% CI, 1.63-5.40) remained consistent.

CONCLUSIONS AND RELEVANCE In this study, our findings indicate that while individuals who use cannabis or cigarettes during adolescence have an increased risk of subsequent psychotic experiences, epidemiological evidence is substantively more robust for cannabis use than it is for tobacco use.

JAMA Psychiatry. doi:10.1001/jamapsychiatry.2017.4271
Published online January 17, 2018.

Author Affiliations: Author affiliations are listed at the end of this article.

Corresponding Author: Hannah J. Jones, PhD, Centre for Academic Mental Health, Population Health Sciences, Bristol Medical School, University of Bristol, Oakfield House, Oakfield Grove, Bristol BS8 2BN, United Kingdom (hannah.jones@bristol.ac.uk).

Cannabis and tobacco are frequently used together, identifying their individual associations on mental health is difficult but important, as this can advance understanding of causal mechanisms and help target preventive interventions.

Individuals who use cannabis regularly have a 2- to 3-fold increased risk of a psychotic outcome.¹ Tobacco use is also associated with an increased incidence of psychotic disorders²⁻⁵ in cohort studies, and (less consistently) with subclinical psychotic symptoms,⁶⁻⁸ with hypothesized casual mechanisms including nicotine increasing dopamine release and inducing D₂-receptor supersensitivity.^{5,9}

However, while a recent systematic review reported a meta-analysis estimate for daily smoking and psychosis that was similar to that for regular cannabis use, the estimate was based on results unadjusted for confounders,⁵ unlike that for cannabis.¹ While concern about confounding leading to overestimation of association on psychosis also exists for cannabis,¹ support for causal effects of cannabis also comes from experimental studies showing an increase in psychotic experiences following exposure to intravenous Δ9-tetrahydrocannabinol (THC).¹⁰ In contrast, experimental studies of nicotine administration do not support the acute onset of psychotic experiences.¹¹

The strongest evidence of a causal effect of tobacco on psychosis is that a genetic locus associated with heaviness of smoking (within the nicotinic receptor *CHRNA5-A3-B4* gene cluster) is 1 of the loci most strongly associated with schizophrenia.¹² However, this is also theoretically consistent with either confounding by shared genetic effects (biological pleiotropy) or, perhaps less plausibly, reverse causality (ie, biological risk of schizophrenia causing smoking behavior).

Associations between genetic risk for psychosis and both cannabis use and heaviness of cigarette use are also consistent with causal effects, reverse-causal effects, and pleiotropy explanations.¹³⁻¹⁵

As most people who use cannabis also smoke cigarettes, teasing out potentially causal effects of cannabis from those of tobacco is difficult, particularly as individuals usually mix their cannabis with tobacco, even when classing themselves as nonsmokers.¹⁶ Measurement error can lead to incorrect estimates of causal effects (see Gage et al¹⁶ and Munafo et al¹⁷ for examples of the impact of measurement error on confounding and main effects) and is particularly likely when using single-time point assessments of exposure status. Thus, other methods for teasing out causal effects of cannabis as distinct from tobacco are required.

One approach that can help inform causal inference is to use behavioral patterns of cannabis and cigarette use over time to identify classes of individuals with different substance use profiles across a developmental period rather than relying on patterns of cannabis and cigarette use at a single point in time.¹⁸ Such methods capture additional information that may enable continual users of cannabis and cigarettes to be distinguished from those who may have experimented briefly.

In this study, we used longitudinal latent class analysis (LLCA) to identify subgroups of individuals based on similar patterns of cigarette and cannabis use behavior over time to examine the association of different classes with subsequent

Key Points

Question Are patterns of adolescent cigarette and cannabis use differentially associated with subsequent onset of psychotic experiences?

Findings In this longitudinal cohort study of 3328 adolescents, there is evidence that both cannabis and cigarette use are associated with subsequent psychotic experiences prior to adjusting for confounders. However, after adjusting, the associations for cigarette-only use attenuated substantially, whereas those for cannabis use remained consistent.

Meaning While individuals who use either cannabis or cigarettes during adolescence appear to be at increased risk of psychotic experiences, the association of psychotic experiences is greater with cannabis than with tobacco smoking.

onset of psychotic experiences, compare patterns of confounding across these classes, and examine the association of childhood psychotic experiences with adolescent patterns of cigarette and cannabis use.

Methods

Participants

The sample comprised individuals within the Avon Longitudinal Study of Parents and Children birth cohort. The initial cohort consisted of 14 062 children born to women residing in the former Avon Health Authority area with expected delivery dates from April 1, 1991, to December 31, 1992.¹⁹⁻²¹ All participants provided written informed consent, and ethical approval was obtained from the Avon Longitudinal Study of Parents and Children Ethics and Law Committee and the local research ethics committees.

Measures

Cigarette and Cannabis Use

Measures of cigarette and cannabis use were collected at 6 time points between ages 14 and 19 years (eAppendix in the [Supplement](#)). As very few individuals used cannabis without tobacco¹⁶ (eTable 1 in the [Supplement](#)), data at each time point were summarized as individuals who did not report cigarettes or cannabis use, individuals who reported cigarette use only, and individuals who reported cannabis use (with or without cigarettes).

Psychotic Experiences

The semi-structured psychosis-like symptom interview (PLIKSi)^{22,23} was used to assess psychotic experiences at ages 12 and 18 years. The PLIKSi allows rating of 12 psychotic experiences including hallucinations, delusions, and thought interference.

The primary psychotic experience measures at ages 12 and 18 years were binary variables relating to whether an individual had at least 1 definite psychotic experience compared with suspected or no psychotic experiences. As sensitivity analyses, we also repeated analyses using narrower (definite psychotic experiences vs none; psychotic disorder vs none) and broader (defi-

Table 1. Sample Demographics for Participants Who Completed Questions Related to Cigarette and Cannabis Use per Time Point^a

Time Point	Data Source	Respondents/ Time Point, No.	Female, No. (%)	Age, y	
				Mean	Median (Range)
1	Interview	4654	2530 (54.4)	13.8	13.8 (12.5-15.2)
2	Postal questionnaire	4537	2608 (57.5)	14.2	14.1 (14-16.2)
3	Interview	4421	2421 (54.8)	15.4	15.3 (14.3-17.5)
4	Postal questionnaire	4169	2478 (59.4)	16.7	16.6 (16.4-18.1)
5	Interview	3541	2002 (56.5)	17.7	17.7 (16.3-19.6)
6	Postal questionnaire	2927	1878 (64.2)	18.6	18.7 (17.8-20)

^a Approximate age used to plot the data was 14 years for time point 1, 15 years for time point 2, 16 years for time point 3, 17 years for time point 4, 18 years for time point 5, and 19 years for time point 6.

nite or suspected psychotic experiences vs none) cutoffs for defining the outcome (eAppendix in the [Supplement](#)).

Potential Confounders

Potential confounders examined included sex, family history of schizophrenia or depression, family history of drug use, maternal and/or paternal smoking during pregnancy, maternal education, highest parental social class, IQ (age 8 years), childhood trauma or experiencing bullying (ages 7-9 years), emotional and behavioral problems (Strengths and Difficulties Questionnaire score, age 9 years), and alcohol use (age 12 years) (eAppendix in the [Supplement](#)).

Statistical Analysis

Longitudinal Latent Class Analysis

Longitudinal latent class analysis was used to derive distinct behavior patterns in the repeated-measures data relating to cigarette and/or cannabis use as previously described.^{24,25} The aim of LLCA is to identify the number of latent classes that adequately explain the relationship between the observed variables. Individuals were included in the analysis if they had data present for 3 or more time points. Starting with 1 class, additional classes were added and the model fit was assessed until the optimal number of classes was achieved. Model fit was assessed using the following parameters: proportion of individuals in each class, sample size-adjusted Bayesian information criterion, and Lo-Mendell-Rubin likelihood ratio test. Longitudinal latent class analysis was performed using MPlus version 7.31 software.²⁶

Association Analyses

Psychotic Experiences as Exposure | Multinomial regression was used to assess whether psychotic experiences at age 12 years were associated with subsequent latent class membership, before and after adjustment for potential confounders, using a manual implementation of the bias-adjusted 3-step method (eAppendix in the [Supplement](#)).²⁷ Analyses were also conducted on a restricted sample omitting 455 participants who used cannabis or cigarettes at age 12 years.

Psychotic Experiences as Outcome | Logistic regression was used to assess whether latent class membership was associated with subsequent psychotic experiences at age 18 years, before and after adjustment for potential confounders. For these analyses, derivation of classes was restricted to data from the first to fourth time point (approximate ages 14-17 years). Other-

wise, the method used to derive classes was as previously described. Restricting data to 4 time points had minimal impact on latent class structure and proportions (eFigure and eTable 2 in the [Supplement](#)). Analyses were also conducted on a restricted sample omitting 149 participants with definite psychotic experiences at age 12 years.

Adjusting for family history of schizophrenia or depression, family history of drug use, paternal smoking during pregnancy, social class, IQ, experiencing bullying, childhood trauma, and alcohol use had almost no association with results for either model previously described (eTable 3 in the [Supplement](#)) but reduced the analysis sample size substantially. We therefore only adjusted for sex, maternal education, maternal smoking during pregnancy, and child Strengths and Difficulties Questionnaire score in our final adjusted model.

Missing Data

Percentage of missing data increased with time (eTable 4 in the [Supplement](#)). Participants in the analysis sample were more likely to be female and to come from more advantaged backgrounds (Table 1 and eTable 5 in the [Supplement](#)).

Results

Data were available for 5300 participants (56.1% female). Based on model fit statistics (eTable 6 in the [Supplement](#)), there was good agreement that a 5-class solution adequately described the heterogeneity within the data.

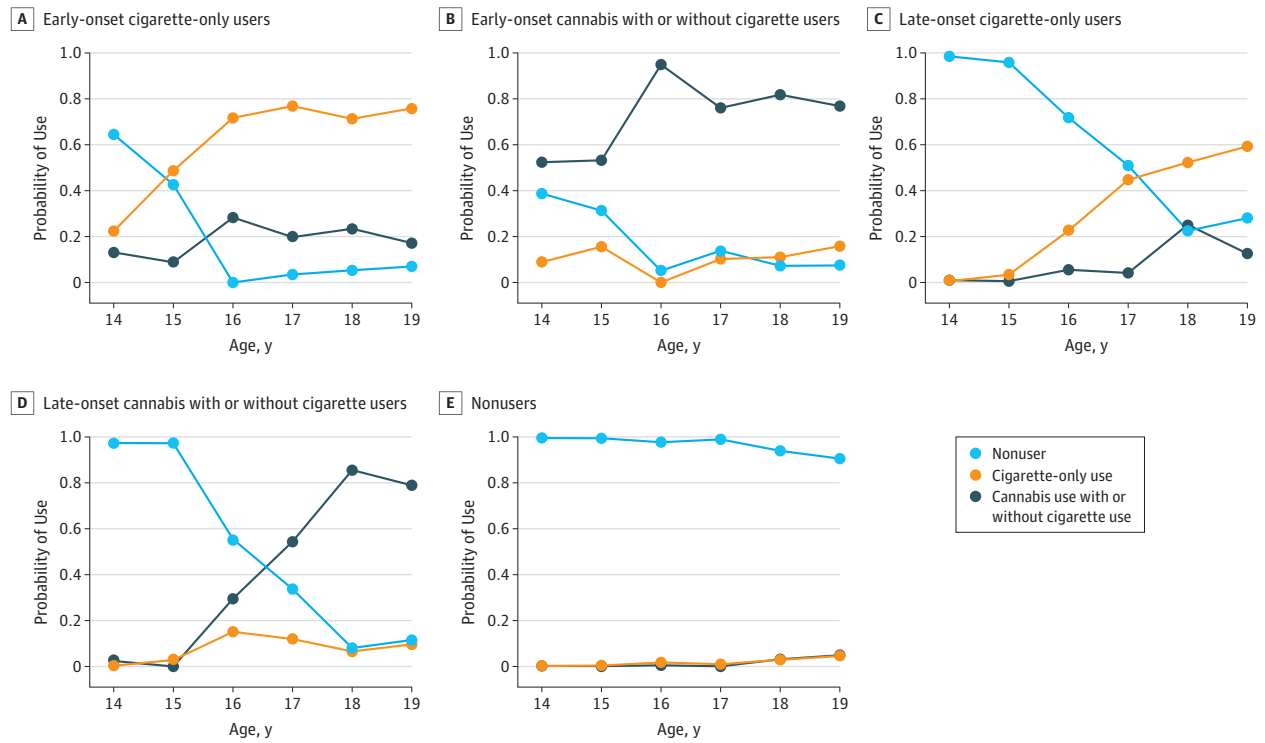
The 5-class model comprised individuals with a higher probability of early-onset cigarette-only use (4.3%), early-onset cannabis use (3.2%), late-onset cigarette-only use (14.8%), late-onset cannabis use (11.9%), and individuals with a very low probability of cigarette or cannabis use (65.9%; referred to as nonusers) (Figure).

Patterns of Cigarette and/or Cannabis Use at Ages 14 to 17 Years and Psychotic Experiences at Age 18 Years

Individuals within the early-onset cigarette-only class, but not the late-onset cigarette-only class, had greater odds of psychotic experiences at age 18 years when compared with nonusers (odds ratio [OR], 3.03; 95% CI, 1.13-8.14; and OR, 0.84; 95% CI, 0.31-2.31, respectively) (Table 2).

There was strong evidence that participants within the early-onset and late-onset cannabis use classes also had increased odds of psychotic experiences (early-onset cannabis

Figure. Five-Class Model of Cigarette and Cannabis Use Patterns From a Sample of 5300 Participants



The probability axis represents the probability of a class member being a nonuser, a cigarette-only user, or a cannabis with or without cigarette user at each time point.

Table 2. Associations Between Cigarette and/or Cannabis Use and Psychotic Experiences at Age 18 Years

Variable	Definite Psychotic Experiences (n = 3328)			
	Unadjusted OR (95% CI) ^a	P Value ^b	Adjusted OR (95% CI) ^{a,c}	P Value ^b
Early-onset		<.001		<.001
Cigarette-only	3.03 (1.13-8.14)		1.78 (0.54-5.88)	
Cannabis	3.79 (1.73-8.31)		3.70 (1.66-8.25)	
Late-onset				
Cigarette-only	0.84 (0.31-2.31)		0.73 (0.27-1.98)	
Cannabis	3.05 (1.69-5.53)		2.97 (1.63-5.40)	

Abbreviation: OR, odds ratio.

^a Compared with nonusers class.

^b The omnibus P value for associations between cigarette and/or cannabis use classes and psychotic experiences at age 18 years.

^c Adjusted for sex, maternal education, emotional and behavioral problems (Strengths and Difficulties Questionnaire score at age 9 years), and maternal cigarette smoking during pregnancy.

Table 3. Associations Between Psychotic Experiences at Age 12 Years and Subsequent Cigarette and/or Cannabis Use

Definite PE	OR (95% CI) ^a				P Value ^b
	Early-Onset		Late-Onset		
	Cigarette	Cannabis	Cigarette	Cannabis	
Unadjusted (n = 4101)	1.17 (0.41-3.33)	0.97 (0.31-3.00)	1.76 (1.01-3.10)	1.66 (0.94-2.91)	.14
Adjusted (n = 4101) ^c	0.86 (0.27-2.81)	0.93 (0.28-3.06)	1.60 (0.91-2.82)	1.65 (0.90-3.05)	.25

Abbreviations: OR, odds ratio; PE, psychotic experiences.

^a Compared with nonusers class.

^b The omnibus P value for association between psychotic experiences at age 12 years and cigarette and/or cannabis use classes.

^c Adjusted for sex, maternal education, emotional and behavioral problems (Strengths and Difficulties Questionnaire score at age 9 years), and maternal cigarette smoking during pregnancy.

use: OR, 3.79; 95% CI, 1.73-8.31; late-onset cannabis use: OR, 3.05; 95% CI, 1.69-5.53).

When adjusting for confounding, the evidence of association between early-onset cigarette-only use and psychotic ex-

periences was attenuated by approximately 60% (adjusted OR, 1.78; 95% CI, 0.54-5.88) (Table 3). In contrast, adjusting for confounding had minimal impact on the associations for early-onset cannabis use (adjusted OR, 3.70; 95% CI, 1.66-

8.25) or late-onset cannabis use (adjusted OR, 2.97; 95% CI, 1.63-5.40).

When comparing the substance use classes with each other (eTable 7 in the [Supplement](#)), there was strong evidence to rule out equivalence between the association of late-onset cannabis use and late-onset cigarette-only use with psychotic experiences (OR, 3.63; 95% CI, 1.12-11.76). There was insufficient evidence to support a difference between the association of early-onset cannabis and early-onset cigarette-only use with psychotic experiences, although this was based on smaller numbers, or to support a difference between late-onset and early-onset cannabis use classes. Results were similar when excluding individuals with psychotic experiences at age 12 years (eTable 7 in the [Supplement](#)).

Sensitivity Analyses

Results of associations between class membership and subsequent psychotic experiences were substantively the same when excluding participants whose psychotic experiences only ever occurred within 2 hours of any drug use (eTable 8 in the [Supplement](#)) and when examining narrower or broader psychotic outcome definitions (eTable 9 in the [Supplement](#)).

Psychotic Experiences at Age 12 Years and Patterns of Cigarette and/or Cannabis Use at Ages 14 to 19 Years

Definite psychotic experiences at age 12 years were associated with increased odds of subsequent late-onset cigarette-only use (OR, 1.76; 95% CI, 1.01-3.10) and late-onset cannabis use (OR, 1.66; 95% CI, 0.94-2.91) as compared with nonusers (Table 3 and eTable 10 in the [Supplement](#)).

There was little evidence that psychotic experiences at age 12 years were associated with increased odds of early-onset cigarette-only or cannabis use; however, these classes had smaller membership (Figure and Table 3). Adjusting for confounders had minimal impact on associations between psychotic experiences at age 12 years and classes of subsequent cannabis and/or cigarette use. The effect estimates for all classes were smaller, and evidence of association weaker (particularly for early-onset classes), when restricting the analysis to nonusers of cigarettes and/or cannabis at age 12 years (eTable 11 in the [Supplement](#)).

Discussion

Both early-onset and late-onset cannabis use classes were associated with psychotic experiences at age 18 years and were only minimally attenuated after adjusting for potential confounders. In contrast, there was inadequate evidence to support an association between either early-onset or late-onset cigarette-only use and psychotic experiences in the adjusted analyses. There was also evidence that participants in the late-onset cannabis use class had higher odds of psychotic experiences than those in the late-onset cigarette-only use class, the 2 most common substance use classes in our data. There was no evidence to support a stronger association of early-onset cannabis use compared with late-onset cannabis use on psychotic outcomes as proposed by some, but not all, studies,¹ although the relatively small size of the early-onset class has limited power to detect small-moderate effects.

Adjusting for a broad range of potential confounders did not alter the estimate of association for either the early- or late-onset cannabis use class but resulted in an approximately 60% attenuation of the estimate for the early-onset cigarette-only class. This difference in the impact of adjustment for confounders indicates that the association between cannabis use and psychotic experiences is more robust against explanations of residual confounding than that for tobacco use.

In comparison, we found little evidence that psychotic experiences in childhood led to increased cannabis use. As other observational studies have indicated,²⁸⁻³⁰ the self-medication hypothesis does not appear to adequately explain the association between cannabis use and psychosis. Such a relationship for tobacco use is also not well supported by our data.

The uncertainty around our estimates means we cannot exclude a possible association of cigarette-only use with psychotic experiences. A number of longitudinal studies have reported that tobacco users are at greater risk for later psychotic disorders.^{2-5,31,32} However, none of these studies adjusted for cannabis use, and while adjusting for diagnoses of drug abuse in 2 of the studies substantially attenuated associations for cigarette smoking⁴ or snus use,³² this is likely a poor measure of cannabis use and hence may have underestimated its confounding effect. In the only longitudinal study, to our knowledge, that has adjusted for cannabis use, this substantially attenuated the association for cigarette smoking, with the fully adjusted model supporting a protective effect of smoking on schizophrenia.³³

In our previous study using the Avon Longitudinal Study of Parents and Children cohort, we reported that the association between cannabis use and psychotic experiences was altered only slightly by adjusting for early or childhood confounders but that interpretation of results adjusted for tobacco use was problematic because of a strong relationship between these measures.¹⁶ In the current study, we are better able to disentangle differential effects of tobacco use from those of cannabis use through use of data at multiple time points to describe patterns of use associated with both of these substances over time. Our findings are consistent with another study in which adjusting for confounding using fixed-effects regression to deal with unmeasured time-invariant effects resulted in much greater attenuation of association between cigarette smoking and psychotic symptoms than for cannabis use.⁸

Another approach to strengthen causal inference is mendelian randomization whereby genetic variants act as assumed unconfounded proxy measures for exposure status.³⁴ One study reported weak evidence of association between a genetic variant within the *CHRNA5-A3-B4* gene cluster and being prescribed antipsychotic medication.³⁵ However, despite this association being stronger in smokers than nonsmokers (as would be expected if this was due to a causal role of smoking on psychosis), there was little statistical evidence for this ($P = .60$).³⁵

We recently conducted a mendelian randomization study and found little association between cigarette smoking initiation and schizophrenia risk,³⁶ while our mendelian randomization study of cannabis initiation and schizophrenia risk provided evidence for causal pathways operating in both directions.¹⁴ However, in both cases our analyses were restricted to smoking and cannabis initiation and might not

reflect the effects of longer-term regular use. The lack of adequate samples and strong genetic instruments for regular cannabis use limit current use of mendelian randomization studies to further inform causal inference.

Limitations

One of the strengths of our study is that we use a large, well-characterized cohort, albeit of mostly European ancestry, with multiple measures of exposures of interest and psychotic experience data over time, with data on a broad range of potential confounders collected prospectively. Using information across the entire adolescent period rather than from a single time point means our results are much less prone to measurement error. However, there is considerable attrition over time, although the use of a latent class method with longitudinal data allows us to maximize use of data for individuals even where participation and question response have been sporadic, and hence to minimize potential selection bias to some extent. While use of a latent class method confers a number of advantages over using measures at single time points, it was not possible to define a class of individuals who use cannabis without tobacco as most cannabis users smoke cannabis in combination with tobacco.³⁷ Therefore, we cannot rule out whether the associations observed between the cannabis use class and psychotic experiences are exacerbated by the combined use of cannabis and cigarettes. While experimental studies of intravenous Δ^9 -THC support a causal effect of cannabis on acute psychotic experiences in the absence of tobacco,¹⁰ there is some evidence that smoking cannabis with tobacco also increases the amount of THC inhaled per gram.³⁸

Furthermore, we have previously found that a substantial proportion of people who smoke cigarettes most heavily also use cannabis, and thus the cigarette-only class might not include those who have been most heavily exposed to tobacco. As the cannabis use group in our study included occasional (1-3 times in the past 6 months) and frequent (daily) users, we were unable to differentiate whether our findings are mainly driven by frequent users; including frequency of substance use data resulted in an unstable model. Our study was also not able to examine associations of longer-term cumula-

tive cannabis and tobacco use and psychosis outcomes, although these analyses may become tractable in the future.

While psychotic experiences in the population are relatively poor predictors of psychotic disorder,²³ they represent the key characteristic of such disorders, and understanding their etiology almost certainly has relevance to understanding the etiology of clinically defined psychosis. However, we were not adequately powered to investigate the effects of cannabis or cigarette use on psychotic disorders and cannot rule out different effects of these substances on other psychosis-related psychopathology, such as negative symptoms. We were also unable to tease out associations of cannabis with chronic vs acute psychotic outcomes, although excluding individuals who reported psychotic experiences only ever occurring within 2 hours of using drugs had minimal effect on our results. Nevertheless, given the long half-life of THC, the only way of determining whether cannabis use can lead to chronic psychotic disorders that persist long after potential effects of exogenous cannabinoids is to study regular users of cannabis who subsequently become abstinent.³⁰

The one longitudinal study of which we are aware that examined this relationship reported only weak evidence of association between ex-cannabis use and psychotic experiences, although there were relatively few ex-cannabis users.³⁰ Given the age of the participants over the course of our study, we were not able to identify a class of ex-cannabis users to clarify this relationship; however, long-term follow-up of this cohort may enable us to address this question more robustly.

Conclusions

Our study found that both adolescent cannabis use and cigarette use are associated with increased risk for subsequent psychotic experiences. This association was greater for cannabis. Associations observed between tobacco use and psychotic experiences are more likely than those for cannabis use to be influenced by other characteristics of people who develop psychotic experiences.

ARTICLE INFORMATION

Accepted for Publication: November 24, 2017.

Published Online: January 17, 2018.

doi:10.1001/jamapsychiatry.2017.4271

Open Access: This is an open access article distributed under the terms of the [CC-BY License](#).
© 2018 Jones HJ et al. *JAMA Psychiatry*.

Author Affiliations: Centre for Academic Mental Health, Population Health Sciences, Bristol Medical School, University of Bristol, Bristol, United Kingdom (Jones, Heron, Hickman, Zammit); Medical Research Centre, Integrative Epidemiology Unit, University of Bristol, Bristol, United Kingdom (Jones, Munafò); Department of Psychological Sciences, University of Liverpool, Liverpool, United Kingdom (Gage); Division of Psychiatry, University College London, London, United Kingdom (Lewis); UK Centre for Tobacco and Alcohol Studies, School of Experimental Psychology, University of Bristol, Bristol, United Kingdom (Munafò); MRC Centre for

Neuropsychiatric Genetics and Genomics, Division of Psychological Medicine and Clinical Neurosciences, Cardiff University School of Medicine, Cardiff, United Kingdom (Zammit).

Author Contributions: Dr Jones and Prof Zammit had full access to all of the data in the study and take responsibility for the integrity of the data and the accuracy of the data analysis.

Concept and design: Jones, Gage, Heron, Munafò, Zammit.

Acquisition, analysis, or interpretation of data: Jones, Gage, Heron, Munafò, Zammit.

Drafting of the manuscript: Jones, Heron, Munafò, Zammit.

Critical revision of the manuscript for important intellectual content: Jones, Gage, Heron, Hickman, Lewis, Munafò, Zammit.

Statistical analysis: Jones, Heron, Zammit.

Obtained funding: Heron, Lewis, Zammit.

Administrative, technical, or material support: Heron, Zammit.

Supervision: Heron, Munafò, Zammit.

Conflict of Interest Disclosures: None reported.

Funding/Support: This study was funded by Medical Research Council grants G0701503 and MR/M006727/1. The UK Medical Research Council, Wellcome Trust grant 102215/2/13/2, and the University of Bristol provided core support for the Avon Longitudinal Study of Parents and Children. This study was supported by the National Institute for Health Research Biomedical Research Centre at the University Hospitals Bristol National Health Service Foundation Trust and the University of Bristol. Dr Jones and Prof Munafò are members of the Medical Research Council Integrative Epidemiology Unit at the University of Bristol, funded by UK Medical Research Council grants MC_UU_12013/1 and MC_UU_12013/6 and the University of Bristol. Dr Gage and Prof Munafò are members of UK Centre for Tobacco and Alcohol Studies, a UK Clinical Research Collaboration Public Health Research Centre of Excellence. Funding was

received from the British Heart Foundation, Cancer Research UK, Economic and Social Research Council, Medical Research Council, and the National Institute for Health Research, under the auspices of the UK Clinical Research Collaboration. Dr Heron and Prof Hickman are members of Development and Evaluation of Complex Interventions for Public Health Improvement. Prof Hickman is a member of the National Institute for Health Research, School of Public Health Research and the National Institute for Health Research, Health Protection Research Unit in Evaluation.

Role of the Funder/Sponsor: The funding sources had no role in design and conduct of the study; collection, management, analysis, and interpretation of the data; preparation, review, or approval of the manuscript; and decision to submit the manuscript for publication.

Disclaimer: The views expressed in this publication are those of the authors and not necessarily those of the National Health Service, the National Institute for Health Research, or the Department of Health.

Additional Contributions: We are extremely grateful to all the families who took part in this study, the midwives for their help in recruiting them, and the whole Avon Longitudinal Study of Parents and Children team, which includes interviewers, computer and laboratory technicians, clerical workers, research scientists, volunteers, managers, receptionists, and nurses. Participants were offered shopping vouchers.

REFERENCES

- Moore THM, Zammit S, Lingford-Hughes A, et al. Cannabis use and risk of psychotic or affective mental health outcomes: a systematic review. *Lancet*. 2007;370(9584):319-328.
- Riala K, Hakko H, Isohanni M, Pouta A, Räsänen P. Is initiation of smoking associated with the prodromal phase of schizophrenia? *J Psychiatry Neurosci*. 2005;30(1):26-32.
- Sorensen HJ, Mortensen EL, Reinisch JM, Mednick SA. A prospective study of smoking in young women and risk of later psychiatric hospitalization. *Nord J Psychiatry*. 2011;65(1):3-8.
- Kendler KS, Lönn SL, Sundquist J, Sundquist K. Smoking and schizophrenia in population cohorts of Swedish women and men: a prospective co-relative control study. *Am J Psychiatry*. 2015;172(11):1092-1100.
- Gurillo P, Jauhar S, Murray RM, MacCabe JH. Does tobacco use cause psychosis? systematic review and meta-analysis. *Lancet Psychiatry*. 2015;2(8):718-725.
- Wiles NJ, Zammit S, Bebbington P, Singleton N, Meltzer H, Lewis G. Self-reported psychotic symptoms in the general population: results from the longitudinal study of the British National Psychiatric Morbidity Survey. *Br J Psychiatry*. 2006;188:519-526.
- Rössler W, Hengartner MP, Angst J, Ajdacic-Gross V. Linking substance use with symptoms of subclinical psychosis in a community cohort over 30 years. *Addiction*. 2012;107(6):1174-1184.
- Fergusson DM, Hall W, Boden JM, Horwood LJ. Rethinking cigarette smoking, cannabis use, and psychosis. *Lancet Psychiatry*. 2015;2(7):581-582.
- Novak G, Seeman P, Le Foll B. Exposure to nicotine produces an increase in dopamine D2(high) receptors: a possible mechanism for dopamine hypersensitivity. *Int J Neurosci*. 2010;120(11):691-697.
- D'Souza DC, Perry E, MacDougall L, et al. The psychotomimetic effects of intravenous delta-9-tetrahydrocannabinol in healthy individuals: implications for psychosis. *Neuropsychopharmacology*. 2004;29(8):1558-1572.
- Smith RC, Singh A, Infante M, Khandat A, Kloos A. Effects of cigarette smoking and nicotine nasal spray on psychiatric symptoms and cognition in schizophrenia. *Neuropsychopharmacology*. 2002;27(3):479-497.
- Schizophrenia working group of the psychiatric genomics consortium. Biological insights from 108 schizophrenia-associated genetic loci. *Nature*. 2014;511(7510):421-427.
- Power RA, Verweij KJH, Zuhair M, et al. Genetic predisposition to schizophrenia associated with increased use of cannabis. *Mol Psychiatry*. 2014;19(11):1201-1204.
- Gage SH, Jones HJ, Burgess S, et al. Assessing causality in associations between cannabis use and schizophrenia risk: a two-sample mendelian randomization study. *Psychol Med*. 2017;47(5):971-980.
- Reginsson GW, Ingason A, Euesden J, et al. Polygenic risk scores for schizophrenia and bipolar disorder associate with addiction. *Addict Biol*. 2017. <http://onlinelibrary.wiley.com/doi/10.1111/adb.12496/full>. Accessed February 23, 2017.
- Gage SH, Hickman M, Heron J, et al. Associations of cannabis and cigarette use with psychotic experiences at age 18: findings from the Avon Longitudinal Study of Parents and Children. *Psychol Med*. 2014;44(16):3435-3444.
- Munafò MR, Timofeeva MN, Morris RW, et al; EPIC Study Group. Association between genetic variants on chromosome 15q25 locus and objective measures of tobacco exposure. *J Natl Cancer Inst*. 2012;104(10):740-748.
- Lanza ST, Collins LM. A mixture model of discontinuous development in heavy drinking from ages 18 to 30: the role of college enrollment. *J Stud Alcohol*. 2006;67(4):552-561.
- Boyd A, Golding J, Macleod J, et al. Cohort Profile: the 'children of the 90s'—the index offspring of the Avon Longitudinal Study of Parents and Children. *Int J Epidemiol*. 2013;42(1):111-127.
- Fraser A, Macdonald-Wallis C, Tilling K, et al. Cohort profile: the Avon Longitudinal Study of Parents and Children: ALSPAC mothers cohort. *Int J Epidemiol*. 2013;42(1):97-110.
- Access the resource: the Avon Longitudinal Study of Parents and Children. <http://www.bris.ac.uk/alspac/researchers/data-access/data-dictionary>. Accessed December 6, 2017.
- Horwood J, Salvi G, Thomas K, et al. IQ and non-clinical psychotic symptoms in 12-year-olds: results from the ALSPAC birth cohort. *Br J Psychiatry*. 2008;193(3):185-191.
- Zammit S, Kounali D, Cannon M, et al. Psychotic experiences and psychotic disorders at age 18 in relation to psychotic experiences at age 12 in a longitudinal population-based cohort study. *Am J Psychiatry*. 2013;170(7):742-750.
- Howe LJ, Trela-Larsen L, Taylor M, Heron J, Munafò MR, Taylor AE. Body mass index, body dissatisfaction and adolescent smoking initiation. *Drug Alcohol Depend*. 2017;178:143-149.
- Taylor M, Collin SM, Munafò MR, MacLeod J, Hickman M, Heron J. Patterns of cannabis use during adolescence and their association with harmful substance use behaviour: findings from a UK birth cohort. *J Epidemiol Community Health*. 2017;71(8):764-770.
- Muthén LK, Muthén BO. Mplus user's guide. 2015. https://www.statmodel.com/html_ug.shtml. Accessed July 13, 2016.
- Heron JE, Croudace TJ, Barker ED, Tilling K. A comparison of approaches for assessing covariate effects in latent class analysis. *Longit Life Course Stud*. 2015;6(4):420-434. doi:10.14301/llcs.v6i4.322
- Henquet C, Krabbendam L, Spauwen J, et al. Prospective cohort study of cannabis use, predisposition for psychosis, and psychotic symptoms in young people. *BMJ*. 2005;330(7481):11.
- Fergusson DM, Horwood LJ, Ridder EM. Tests of causal linkages between cannabis use and psychotic symptoms. *Addiction*. 2005;100(3):354-366.
- Kuepper R, van Os J, Lieb R, Wittchen HU, Höfler M, Henquet C. Continued cannabis use and risk of incidence and persistence of psychotic symptoms: 10 year follow-up cohort study. *BMJ*. 2011;342:d738.
- Weiser M, Reichenberg A, Grotto I, et al. Higher rates of cigarette smoking in male adolescents before the onset of schizophrenia: a historical-prospective cohort study. *Am J Psychiatry*. 2004;161(7):1219-1223.
- Munafò MR, Larsson Lönn S, Sundquist J, Sundquist K, Kendler K. Snus use and risk of schizophrenia and non-affective psychosis. *Drug Alcohol Depend*. 2016;164:179-182.
- Zammit S, Allebeck P, Dalman C, Lundberg I, Hemmingsson T, Lewis G. Investigating the association between cigarette smoking and schizophrenia in a cohort study. *Am J Psychiatry*. 2003;160(12):2216-2221.
- Davey Smith G, Hemani G. Mendelian randomization: genetic anchors for causal inference in epidemiological studies. *Hum Mol Genet*. 2014;23(R1):R89-R98.
- Wium-Andersen MK, Ørsted DD, Nordestgaard BG. Tobacco smoking is causally associated with antipsychotic medication use and schizophrenia, but not with antidepressant medication use or depression. *Int J Epidemiol*. 2015;44(2):566-577.
- Gage SH, Jones HJ, Taylor AE, Burgess S, Zammit S, Munafò MR. Investigating causality in associations between smoking initiation and schizophrenia using Mendelian randomization. *Sci Rep*. 2017;7:40653.
- Amos A, Wiltshire S, Bostock Y, Haw S, McNeill A. 'You can't go without a fag...you need it for your hash'—a qualitative exploration of smoking, cannabis and young people. *Addiction*. 2004;99(1):77-81.
- Van der Kooy F, Pomahacova B, Verpoorte R. Cannabis smoke condensate II: influence of tobacco on tetrahydrocannabinol levels. *Inhal Toxicol*. 2009;21(2):87-90.