

Intimate Partner Violence

GINNY CARTER, PHD, RN

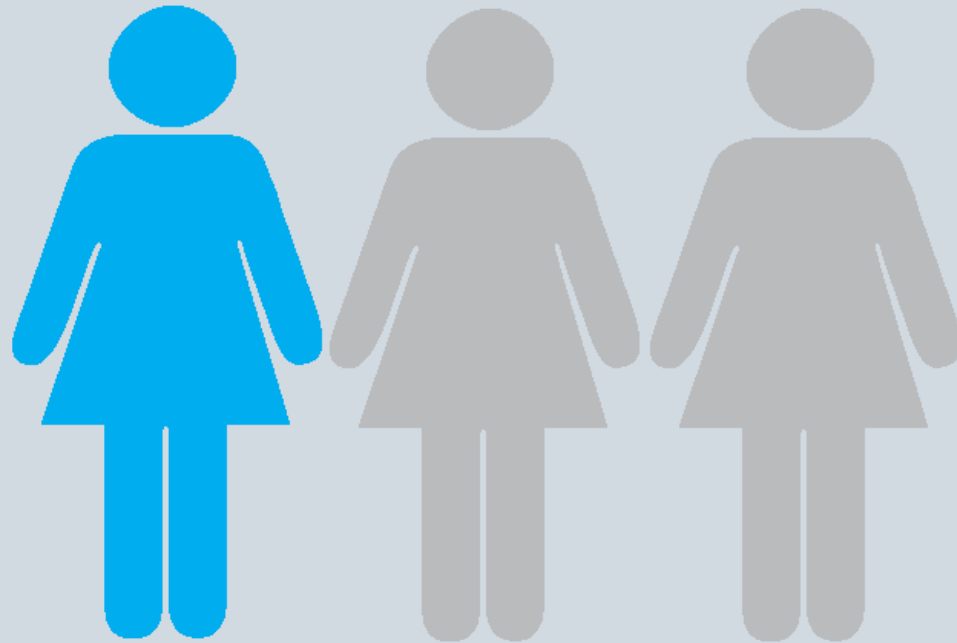
5/20/2020

Outline

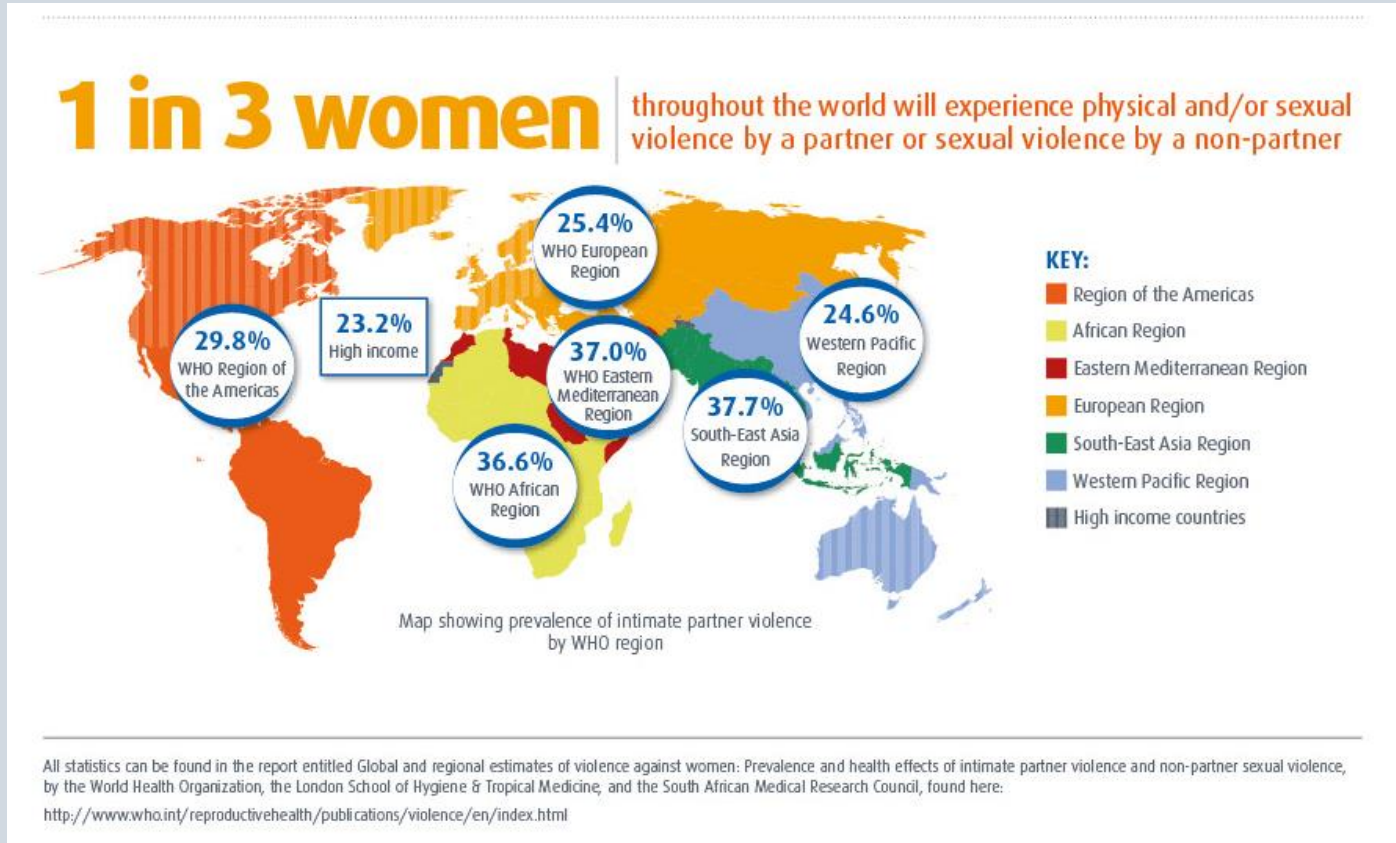
1. What is intimate partner violence
2. What is the relationship between intimate partner violence and substance use
3. What are the effects of intimate partner violence on mothers and children
4. What are the implications for clinical practice

Intimate Partner Violence: What is it?

“refers to any behavior within an intimate relationship that causes physical, psychological or sexual harm to those in the relationship” – Garcia-Moreno et al., 2012, p.5



Intimate Partner Violence: Global Problem



Health Consequences

Physical and Mental Health

Acute and Long-term

Substance Use and Intimate Partner Violence

Women who have a substance use disorder are at higher risk to experiences IPV

Women who experience IPV are at higher risk for a substance user disorder

Substance use disorders are 3.4 times more prevalent in women that have experienced violence

Women who use alcohol or drugs are less likely to reach out to the police to press charges

The Effects of Intimate Partner Violence

1. Pregnancy
2. Child Development
3. Intergenerational Violence

The Effects of Intimate Partner Violence: Pregnancy

Prenatal

- More likely to attend no prenatal visits
- More likely to attend their first visits later in their pregnancy
- More likely to go to fewer than the recommended number of visits

Delivery

- More likely to have a home birth
- Delivery and neonatal complications: placental abruption, miscarriage, preterm birth, low birth weight, perinatal death

The Effects of Intimate Partner Violence: Child Development

Breastfeeding

- Triggering
- hypothalamo-hypophyseal axis

Health Care Utilization

- Access to resources
- Permission

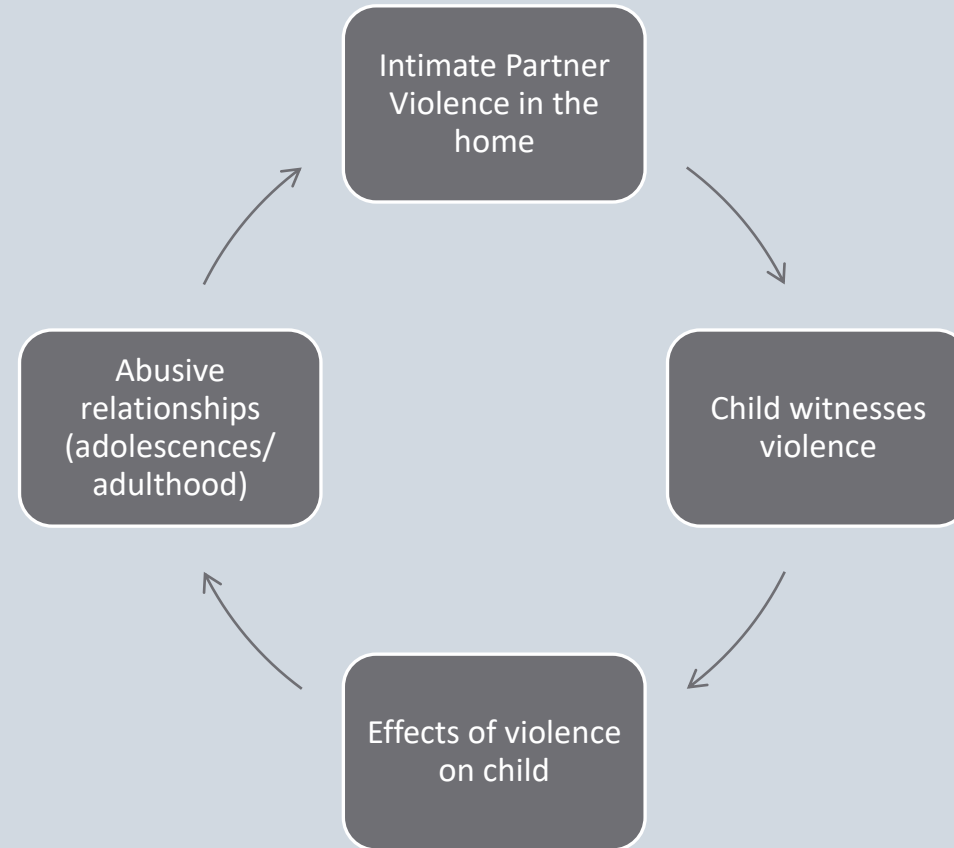
Parenting

- More anxious about aspects of childcare
- Lower self-esteem and confidence

Exposure

- Witnessing violence
- Learned behavior

The Effects of Intimate Partner Violence: Intergenerational Violence



Clinical Implications

1. Identifying at risk individuals (mothers and children)
2. Ensuring safety
3. Implementing effective interventions
 - i. Gender-responsive trauma informed care
 - ii. Integrated services
4. Protective factors

References

- Alhabib, S., Nur, U., & Jones, R. (2010). Domestic violence against women: Systematic review of prevalence studies. *Journal of Family Violence*, 25(4), 369-382.
- Arriaga, X. B., & Foshee, V. A. (2004). Adolescent dating violence - Adolescents follow in their friends', or their parents', footsteps? *Journal of Interpersonal Violence*, 19(2), 162-184. doi: 10.1177/0886260503260247
- Bamiwuyeye, S. O., & Odimegwu, C. (2014). Spousal violence in sub-Saharan Africa: does household poverty-wealth matter? *Reprod Health*, 11, 10. doi: 10.1186/1742-4755-11-45
- Campbell, J., Jones, A. S., Dienemann, J., Kub, J., Schollenberger, J., O'Campo, P., . . . Wynne, C. (2002). Intimate partner violence and physical health consequences. *Archives of Internal Medicine*, 162(10), 1157-1163. doi: 10.1001/archinte.162.10.1157
- Capaldi, D. M., Knoble, N. B., Shortt, J. W., & Kim, H. K. (2012). A Systematic Review of Risk Factors for Intimate Partner Violence. *Partner Abuse*, 3(2), 231-280. doi: 10.1891/1946-6560.3.2.231
- Centers for Disease Control and Prevention. (2015). Intimate Partner Violence: Consequences. from <http://www.cdc.gov/violenceprevention/intimatepartnerviolence/consequences.html>
- Centers for Disease Control and Prevention. (2016). Intimate partner Violence: Definitions from <http://www.cdc.gov/violenceprevention/intimatepartnerviolence/definitions.html>
- Coker, A. L., Smith, P. H., Bethea, L., King, M. R., & Mckeown, R. E. (2000). Physical health consequences of physical and psychological intimate partner violence. *Arch Fam Med*, 9(5), 451-457.
- Connor, J. L., Kypri, K., Bell, M. L., & Cousins, K. (2011). Alcohol involvement in aggression between intimate partners in New Zealand: a national cross-sectional study. *BMJ Open*, 1(1), e000065. doi: 10.1136/bmjopen-2011-000065
- Constantino, R. E., Sekula, L. K., Rabin, B., & Stone, C. (2000). Negative life experiences, depression, and immune function in abused and nonabused women. *Biol Res Nurs*, 1(3), 190-198.
- Cunradi, C. B., Caetano, R., & Schafer, J. (2002). Socioeconomic predictors of intimate partner violence among White, Black, and Hispanic couples in the United States. *Journal of Family Violence*, 17(4), 377-389. doi: 10.1023/a:1020374617328
- Decker, M. R., Latimore, A. D., Yasutake, S., Haviland, M., Ahmed, S., Blum, R. W., . . . Astone, N. M. (2015). Gender-based violence against adolescent and young adult women in low- and middle-income countries. *J Adolesc Health*, 56(2), 188-196. doi: 10.1016/j.jadohealth.2014.09.003
- Ellsberg, M. C., Pena, R., Herrera, A., Liljestrand, J., & Winkvist, A. (1999). Wife abuse among women of childbearing age in Nicaragua. *American Journal of Public Health*, 89(2), 241-244. doi: 10.2105/Ajph.89.2.241
- Gass, J. D., Stein, D. J., Williams, D. R., & Seedat, S. (2011). Gender Differences in Risk for Intimate Partner Violence Among South African Adults. *Journal of Interpersonal Violence*, 26(14), 2764-2789. doi: 10.1177/0886260510390960
- Gazmararian, J. A., Adams, M. M., Saltzman, L. E., Johnson, C. H., Bruce, F. C., Marks, J. S., & Zahniser, S. C. (1995). The relationship between pregnancy intendedness and physical violence in mothers of newborns. The PRAMS Working Group. *Obstet Gynecol*, 85(6), 1031-1038.
- Hart, B. J., & Klein, A. R. (2013). Practical Implications of Current Intimate Partner Violence Research for Victim Advocates and Service Providers: U.S. Department of Justice.
- Heath, N. M., Chesney, S. A., Gerhart, J. I., Goldsmith, R. E., Luborsky, J. L., Stevens, N. R., & Hobfoll, S. E. (2013). Interpersonal violence, PTSD, and inflammation: potential psychogenic pathways to higher C-reactive protein levels. *Cytokine*, 63(2), 172-178. doi: 10.1016/j.cyto.2013.04.030
- Heise, L. L. (1994). Gender-based violence and women's reproductive health. *Int J Gynaecol Obstet*, 46(2), 221-229.
- Heise, L. L. (1998). Violence against women: an integrated, ecological framework. *Violence Against Women*, 4(3), 262-290.
- Inslicht, S. S., Marmar, C. R., Neylan, T. C., Metzler, T. J., Hart, S. L., Otte, C., . . . Baum, A. (2006). Increased cortisol in women with intimate partner violence-related posttraumatic stress disorder. *Psychoneuroendocrinology*, 31(7), 825-838. doi: <http://dx.doi.org/10.1016/j.psyneuen.2006.03.007>
- Inter-Agency Standing Committee. (2005). Guidelines for Gender-Based Violence in Humanitarian Settings: Focusing on Prevention of and Response to Sexual Violence in Emergencies.
- Jewkes, R. (2002). Intimate partner violence: causes and prevention. *Lancet*, 359(9315), 1423-1429. doi: 10.1016/s0140-6736(02)08357-5
- Kiss, L., Schraiber, L. B., Heise, L., Zimmerman, C., Gouveia, N., & Watts, C. (2012). Gender-based violence and socioeconomic inequalities: Does living in more deprived neighbourhoods increase women's risk of intimate partner violence? *Social Science & Medicine*, 74(8), 1172-1179. doi: 10.1016/j.socscimed.2011.11.033
- Jordan, C. E., Campbell, R., & Follingstad, D. (2010). Violence and women's mental health: the impact of physical, sexual, and psychological aggression. *Annu Rev Clin Psychol*, 6, 607-628. doi: 10.1146/annurev-clinpsy-090209-151437
- Kendall-Tackett, K. A. (2007). Inflammation, cardiovascular disease, and metabolic syndrome as sequelae of violence against women - The role of depression, hostility, and sleep disturbance. *Trauma Violence & Abuse*, 8(2), 117-126. doi: 10.1177/1524838007301161
- Krug, E. G., Dahlberg, L. L., Mercy, J. A., Zwi, A. B., & Lozano, R. (2002). World Report on Violence and Health. Geneva: World Health Organization.
- Kyriacou, D. N., Anglin, D., Taliaferro, E., Stone, S., Tubb, T., Linden, J. A., . . . Kraus, J. F. (1999). Risk factors for injury to women from domestic violence. *New England Journal of Medicine*, 341(25), 1892-1898. doi: 10.1056/nejm199912163412505
- Linder, J. R., & Collins, W. A. (2005). Parent and peer predictors of physical aggression and conflict management in romantic relationships in early adulthood. *Journal of Family Psychology*, 19(2), 252-262. doi: 10.1037/0893-3200.19.2.252
- McCloskey, L. A., Williams, C., & Larsen, U. (2005). Gender inequality and intimate partner violence among women in Moshi, Tanzania. *Int Fam Plan Perspect*, 31(3), 124-130. doi: 10.1363/ffp.31.124.05
- Muelleman, R. L., Lenaghan, P. A., & Pakieser, R. A. (1996). Battered Women: Injury Locations and Types. *Annals of Emergency Medicine*, 28(5), 486-492. doi: [http://dx.doi.org/10.1016/S0196-0644\(96\)70110-5](http://dx.doi.org/10.1016/S0196-0644(96)70110-5)
- O'Donnell, C. J., Smith, A., & Madison, J. R. (2002). Using Demographic Risk Factors to Explain Variations in the Incidence of Violence Against Women. *Journal of Interpersonal Violence*, 17(12), 1239-1262. doi: 10.1177/088626002237854
- Pico-Alfonso, M. A., Garcia-Linares, M. I., Celda-Navarro, N., Herbert, J., & Martinez, M. (2004). Changes in cortisol and dehydroepiandrosterone in women victims of physical and psychological intimate partner violence. *Biol Psychiatry*, 56(4), 233-240. doi: 10.1016/j.biopsych.2004.06.001
- Renner, L. M., & Slack, K. S. (2006). Intimate partner violence and child maltreatment: Understanding intra- and intergenerational connections. *Child Abuse & Neglect*, 30(6), 599-617. doi: <http://dx.doi.org/10.1016/j.chiabu.2005.12.005>
- Shannon, L., Logan, T., Cole, J., & Walker, R. (2008). An examination of women's alcohol use and partner victimization experiences among women with protective orders. *Substance Use & Misuse*, 43(8-9), 1110-1128. doi: 10.1080/10826080801918155
- 10.1016/j.genhosppsych.2009.02.004
- Sheridan, D. J., & Nash, K. R. (2007). Acute Injury Patterns of Intimate Partner Violence Victims. *Trauma, Violence, & Abuse*, 8(3), 281-289. doi: 10.1177/1524838007303504
- United Nations Entity for Gender Equality and Empowerment of Women [UN Women]. (2012). Key theoretical models for building a comprehensive approach. from <http://endvawnow.org/en/articles/647-key-theoretical-models-for-building-a-comprehensive-approach.html>
- Vives-Cases, C., Gil-Gonzalez, D., & Carrasco-Portino, M. (2009). VERBAL MARITAL CONFLICT AND MALE DOMINATION IN THE FAMILY AS RISK FACTORS OF INTIMATE PARTNER VIOLENCE. *Trauma Violence & Abuse*, 10(2), 171-180. doi: 10.1177/1524838008331193
- Vives-Cases, C., Ruiz-Cantero, M. T., Escriba-Aguir, V., & Miralles, J. J. (2011). The effect of intimate partner violence and other forms of violence against women on health. *J Public Health (Oxf)*, 33(1), 15-21. doi: 10.1093/pubmed/fdq101
- Walsh, K., Keyes, K. M., Koenen, K. C., & Hasin, D. (2015). Lifetime prevalence of gender-based violence in US women: associations with mood/ anxiety and substance use disorders. *J Psychiatr Res*, 62, 7-13. doi: 10.1016/j.jpsychires.2015.01.002
- Yount, K. M., Krause, K. H., & VanderEnde, K. E. (2015). Economic Coercion and Partner Violence Against Wives in Vietnam: A Unified Framework? *J Interpers Violence*. doi: 10.1177/0886260515584350

Thank you!

Questions?